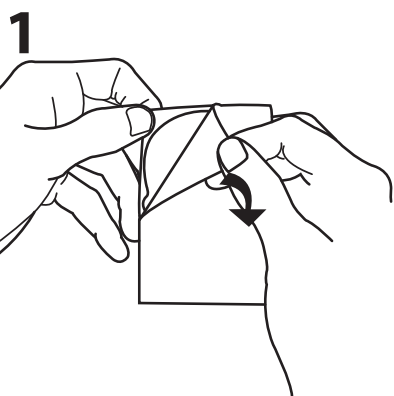


# How to apply the reflective stickers.

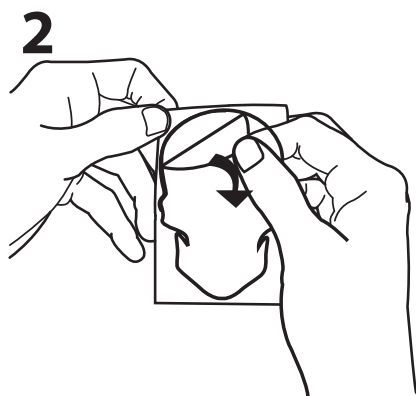


**Stick them to... Clothing, Bike Frame, Mudguard, Helmet, Bag, Skates, Trainers...**

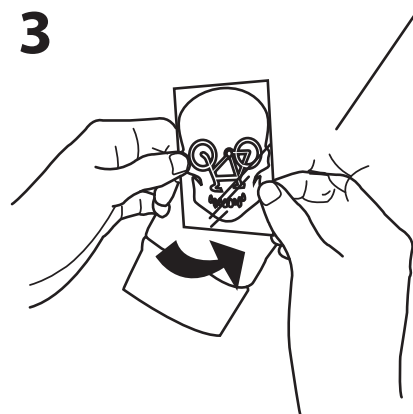
**Applying your Biker Stickers may be tricky!! - Please take your time and do it carefully.**



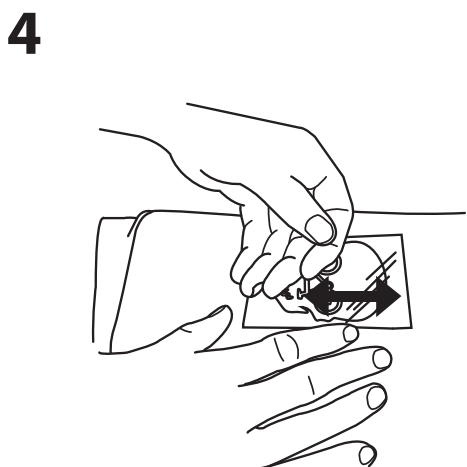
**1**  
Peel off the brown sheet to reveal the back of the sticker.



**2**  
Carefully Peel off the white backing sheet without pulling away any small pieces. (Try not to touch the sticker)



**3**  
Apply the sticky side onto fabric or other surface.



**4**  
Press down and rub firmly over the sticker.



**5**  
Peel the clear sheet making sure all small parts stay on the surface.



**6**  
Cycle safely!

**The adhesive is not permanent on fabric if put in a washing machine.**

